

2023-
2024

WILSON ELEMENTARY

Parent & Student Handbook

409 Magnolia Street
Gridley, CA 95948
530-846-3675
Fax (530) 846-3872
<http://wilson.gusd.org/>

Gridley Unified School District
429 Magnolia Street,
Gridley, CA 95948
530 846-4721
Fax (503) 846-4595
<http://www.gusd.org>

TABLE OF CONTENTS



2	Table of Contents
3	Principal's Message
4	Vision & Mission
5	Goals for 2023-2024
6	Contacts
7	School Hours & Operations
9	Family Involvement
11	Student Attendance
12	Educational Program
15	Student Behavior & Discipline
17	School Preparedness
18	Student Services
20	School Safety
23	Important Policies
25	Our Commitment to Support Student Learning
26	Wilson Team 2023-2024

PRINCIPAL'S MESSAGE



For more than 60 years, Wilson Elementary has served some of Gridley's youngest learners. As a collaborative staff community, we take this responsibility seriously and do everything we can to support students' academic achievement, social-emotional development, health and wellbeing so they are prepared for life in secondary school and beyond.

As parents, guardians, aunts, uncles, grandparents or siblings, we encourage you to help students' reach their fullest potential. Please consider getting informed, involved, and engaged this school year in ways you never have before!

Joan Schumann, PhD
Principal of Wilson Elementary



VISION & MISSION

every student matters;
every day counts

At Wilson Elementary, we believe all students can achieve greatness. As a collaborative school community, we engage students in quality learning experiences each day and cultivate family support in effort to prepare students for academic success in secondary education and promote social-emotional wellbeing for lifelong health and happiness.



OUR GOALS

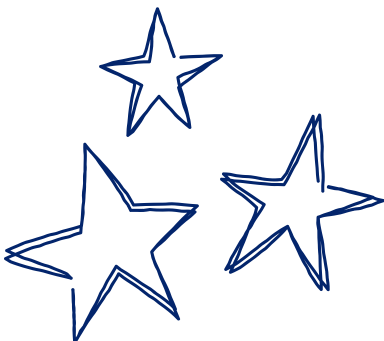
Goal #1: Wilson Elementary will engage in a process of continuous self-improvement in order to provide a high quality educational program for all students.

Goal #2: Wilson Elementary will provide efficient and effective supplemental support and intervention for students who are at risk of not meeting the grade level standards.



Goal #3: Wilson Elementary will utilize a PBIS (preventative) framework for promoting positive behavior and teaching social-emotional competencies.

Goal #4: Wilson Elementary will foster strong community and parent partnerships by offering multiple opportunities to connect, engage, and understand students' educational progress.



WILSON
ELEMENTARY



CONTACTS



Joan Schumann, PhD

Wilson Elementary Principal



Sarah Moore

Wilson Elementary Assistant Principal

Wilson Elementary Office Staff

Patty Ramos, School Secretary
Amber Corona, Office Clerk
Veronica Aceves, Office Clerk

GUSD Superintendent

Justin Kern
jkern@gusd.org

GUSD Board of Trustees

Eric Waterbury, President
Drew Becker
Joe Dewsnup
Sonia Zarate
Art Cota
Cheryl Argetsinger
Brandon Oakley

SCHOOL HOURS & OPERATIONS



School Hours

Grade 2 & Grade 3

Monday, Tuesday, Thursday, Friday
8:30 am - 2:35 pm

Grades 4 & Grade 5

Monday, Tuesday, Thursday, Friday
8:30 am - 3:10 pm

Early Release Schedule

8:30 am-1:45 pm

Early Release Schedule

8:30 am-1:45 pm

School Communications

All official school communications are delivered through Parent Square so it is important all parents & guardians have set-up their preferences for communication through this online system. Parents should expect to receive teacher updates and regular communication from school administration; including information related to progress reports, field trips, and homework assignments.

Should you require support for getting connected through Parent Square, please contact support@gusd.org

Change of Contact Information

It is very important that parents maintain an up-to-date address and telephone number record at the school office. Please notify the school office immediately if you have a change of contact information during the school year. The most convenient method for keeping this information up to date is to log on to Parent Square/Aeries portal. If you have unreliable Internet access, you may also call the school office.



It is imperative for your child's safety that we have current contact information at all times.

SCHOOL HOURS & OPERATIONS

New Student Registration

New registering students will receive a classroom assignment and begin school 1-2 school days following their enrollment. After completing the online enrollment application, parents need to submit a hard copy proof of address, birth certificate, and immunization records. This will enable our school staff to prepare for the new student and to contact the student's previous school to verify registration information. No student will be enrolled without evidence of required immunizations and, when appropriate, verification of age.

School Transfer

When a student transfers to another school, the parents or guardians should notify the office in advance so that instructions can be given for checking out. All books and materials must be returned and all fines paid before a transfer can be given. A parent or guardian must come to the school office to complete the final checkout forms.

Phone Use Policy

The office telephone is a business phone and is not to be used by students except in an emergency. Students are not allowed to use the office phone to make personal arrangements (such as requesting permission to go to another student's home after school). Cell phones may be brought to school, but must be turned off and kept out of sight while on school grounds.

Food & Office Deliveries

In order to allow for efficient and effective office functioning, please refrain from bringing your child outside food and beverages. Birthday treats will be allowed; however, we encourage you to send these treats directly with your child so as to ensure the treats arrive to the classroom on time. Communicate all classroom deliveries ahead of time with your child's teacher using Parent Square messages.

Transportation Messaging

To avoid confusion, please communicate changes to your child's pick-up and/or drop-off plans directly with your child's teacher and your child. For example, if your child usually takes the bus home and you need to pick them up for an appointment, please make sure the teacher and child are notified ahead of time so our office staff can update bus lists accordingly.

Books for Breakfast

What better way to start your day than reading with your child? Please join us for our semi-monthly Books for Breakfast. After eating breakfast, you and your child can select from a range of books laid out for the occasion. Families are welcome to bring in little ones to join as well, and volunteers are always welcome to join and support the important act of reading with a child!

Family Literacy Night

This fall, please join us for our first BIG Family event! With the whole family invited, the kids can show off their skills in the English Language Arts. Whether it be flashlight reading in the Library, group vocabulary games or story time with puppets, there's something fun for everyone! Be sure to stay around for the grand finale: A Book Bonanza!

Family STEM Night

This fun-filled Family Night involves activities all over campus. While the children zip around from room to room, the parents are just as engaged with either learning to make slime, measuring and monitoring heart rates or observing ongoing experiments in our Science Lab! Snacks and surprises always make for a special evening of STEM (Science - Technology - Engineering - Math) Learning!

Health & Wellness Fair

The number one reason students stay home from school is illness. By maintaining good health and wellness, you can prevent illnesses such as the common cold and stay in school! Come and join us as we celebrate various ways to stay healthy and learn about new ways to foster a life of happiness and wellbeing.

Campus Beautification

If you have not seen our beautiful school garden, you are missing out! In order to maintain this beautiful new learning space for students, we are calling all Green Thumbs to help us with regular maintenance, new projects, and classroom support outside. Please let us know if interested in helping out!

School Site Council

Wilson's School Site Council involves staff & parents representatives discussing and deciding on important school plans & policies. Each year, new members are voted in and meet regularly throughout the year.

Parent-Teacher Association (PTA)

Another great way to get involved is through our PTA! Movie Nights, School Dances, and fundraising efforts are all a part of the PTA planning & fun! Reach out to...for more information!



Parents help make our school even better!

OUR YEAR AHEAD...



WILSON ELEMENTARY SCHOOL CALENDAR

"Every student matters, everyday counts"

530-846-3675 • wilson.gusd.org

2023 - 2024

AUGUST 2023

S	M	T	W	T	F	S
		1	2	3	4	5
6	7	8	9	10	11	12
13	14	15	16	17	18	19
20	21	22	23	24	25	26
27	28	29	30	31		

SEPTEMBER 2023

S	M	T	W	T	F	S
					1	2
3	4	5	6	7	8	9
10	11	12	13	14	15	16
17	18	19	20	21	22	23
24	25	26	27	28	29	30

OCTOBER 2023

S	M	T	W	T	F	S
1	2	3	4	5	6	7
8	9	10	11	12	13	14
15	16	17	18	19	20	21
22	23	24	25	26	27	28
29	30	31				

NOVEMBER 2023

S	M	T	W	T	F	S
			1	2	3	4
5	6	7	8	9	10	11
12	13	14	15	16	17	18
19	20	21	22	23	24	25
26	27	28	29	30		

DECEMBER 2023

S	M	T	W	T	F	S
					1	2
3	4	5	6	7	8	9
10	11	12	13	14	15	16
17	18	19	20	21	22	23
24	25	26	27	28	29	30
31						

JANUARY 2024

S	M	T	W	T	F	S
	1	2	3	4	5	6
7	8	9	10	11	12	13
14	15	16	17	18	19	20
21	22	23	24	25	26	27
28	29	30	31			

FEBRUARY 2024

S	M	T	W	T	F	S
				1	2	3
4	5	6	7	8	9	10
11	12	13	14	15	16	17
18	19	20	21	22	23	24
25	26	27	28	29		

MARCH 2024

S	M	T	W	T	F	S
					1	2
3	4	5	6	7	8	9
10	11	12	13	14	15	16
17	18	19	20	21	22	23
24	25	26	27	28	29	30
31						

APRIL 2024

S	M	T	W	T	F	S
	1	2	3	4	5	6
7	8	9	10	11	12	13
14	15	16	17	18	19	20
21	22	23	24	25	26	27
28	29	30				

MAY/JUNE 2024

S	M	T	W	T	F	S
			1	2	3	4
5	6	7	8	9	10	11
12	13	14	15	16	17	18
19	20	21	22	23	24	25
26	27	28	29	30	31	1
2	3	4	5	6	7	8

Holiday - No School	Winter Arts Festival	Wilson Track Meet
First/Last Day of School	Health and Wellness Fair	Attendance Carnivals
Family STEM Night	Open House & Spring Arts Festival	
Parent Conferences		
Back to School Night		
Family Literacy Night		
Early Release Day		
Books for Breakfast (BFB)		

Regular Day Schedule
 8:30 am - 2:35 pm - Grades 2&3
 8:30 am - 3:10 pm - Grades 4&5

Early Release Day Schedule : 8:30 am - 1:45 pm

Regular attendance is a necessary requisite to a successful school year. Loss of school time places a student at a serious disadvantage both in terms of completing assignments and in maintaining enthusiasm. We ask that all parents ensure the regular, on-time attendance of their children at school. California law states that absences are excused only if the child is ill or there is an excuse that meets the requirements of the *California Education Code* Section 48205. Even excused absences that cause your child to miss significant amounts of school can cause your child to fall behind in their academic progress and social connection.

Education Code Section 48260 defines a truant as a pupil who has missed more than 30 minutes on three days without a valid excuse in one school year. Our goal is to have all children present in school every day and on time. Our district's policy is that we may require verification of absences due to illness or quarantine if your child has missed school for three consecutive days. Please be aware that going "out of town" when school is in session with your child is an unexcused absence.

Students who are identified as having excess absences or disciplinary concerns may be referred to the School Attendance Review Board. The SARB Board meets monthly and consists of community and school partners who collaborate and assign resources, set plans, and provide families with the support they need in order to get their child(ren) to school.

"Excused" versus "Unexcused" Absences

Absence due to any one or more of the following causes, when verified, is considered excused:

1. Illness
2. Quarantine directed by a county or city health officer
3. Appointments with doctors, dentists, and optometrists
4. Attending funeral services of a member of the immediate family
5. Court appearances

Unexcused absences occur when students stay out of school without verification. Oversleeping, hunting, fishing, and shopping trips, for example, are not considered excusable absences. Excessive unexcused absences may result in a SARB (School Attendance Review Board) referral.

Clearing Your Child's Absence

When students who have been absent return to school, parents are responsible for clearing the absence within 2 school days, or that specific absence(s) will be unexcused thereafter. Verify the reason for the absence using at least one of the following methods:

1. A signed written note (in ink) from the parent with their phone number containing the following components: current date, student name, exact absence date(s), or hour(s) missed, and reason for the absence(s).
2. Conversation, in person or by telephone, between the verifying employee and the student's parents/legal guardian.
3. Written note from medical providers, court summons, employment appointment, etc.

Academic Program & Curriculum Adoptions

English Language Arts - Benchmark Advance

In our final year of adoption, Wilson Elementary will join McKinley Primary in reviewing and adopting new ELA curriculum this school year. Parents will also have an opportunity to review all the materials up for adoption. During this review, we will be looking specifically at the curriculum's phonics and phonemic awareness sequence to ensure it aligns with the science of reading, which is a significant body of research that delineates exactly how students learn to read. This, in turn, will ensure Gridley students leave their elementary career as proficient readers before entering secondary settings.

Mathematics - GoMath

In our second year of adoption, Wilson Elementary teachers have planned and prepared to teach this comprehensive program alongside our supplement, Spring Math. With these two resources strongly implemented, students are provided with opportunities to develop strong fact fluency, conceptual understanding, and problem-solving strategies.

Science - Inspire

Co-taught by both the classroom and Science Lab teachers, Wilson's science curriculum is in its second year of implementation. This year, a focus on assessment will provide students with an opportunity to relearn the concepts they have not yet mastered.

Social Studies - myWorld & Step up to Writing Integration

This year, our K-5 Social Studies curriculum will be integrated with our Writing Program, Step Up to Writing. In this way, students will have the opportunity to write informative, opinion, and narrative pieces about California and US history, community citizenship, and, government systems.

Social-Emotional Learning (SEL) Curriculum - Second Step

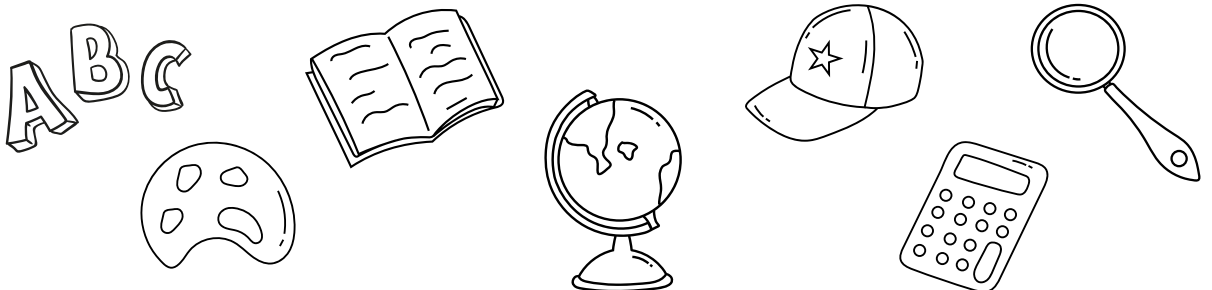
During the SEL Lessons, students learn about ways to identify their own and others emotions; communicate to solve problems; and, take a stand against bullying behavior.

Elementary Music Program

Wilson is proud to offer a new music program that begins before they arrive to our campus. In Grade 2, students are introduced to melody and rhythm while in Grade 3, they begin playing their first instrument, the Ukulele. In Grades 4 and 5, they develop the dexterity needed to master the recorder which sets up them up for band instruments.

Elementary PE Program

In line with California State Law, all Wilson students receive 200 minutes every 10 days of Physical Education. Our robust PE offering includes lessons targeting basic skills development, team sports, along with opportunities to develop effective communication, collaboration, and problem-solving skills.



Rotation Classes & Student Enrichment

This year, Wilson Rotation Classes are rotating! This scheduling method, although confusing at first, allows for Language Therapy, English Language Services and other student programs to be delivered to students without missing the same Rotation Class each day. What's more, it has been shown to increase attendance since the students can expect something new every day and every week!

Grade 2 & 3 Rotation Cycles

Week	Day 1	Day 2	Day 3	Day 4	Day 5	Day 6
A	PE	Science Lab	Library	PE	SEL	Music
B	Science Lab	Library	PE	SEL	Music	PE
C	Library	PE	SEL	Music	PE	Science Lab
D	PE	SEL	Music	PE	Science Lab	Library
E	SEL	Music	PE	Science Lab	Library	PE

Grade 4 & 5 Rotation Cycles

Week	Monday	Tuesday	Wednesday	Thursday	Friday
A	PE	Library/SEL (every 2 weeks)	PE	Science Lab	Music
B	Library/SEL (every 2 weeks)	PE	Science Lab	Music	PE
C	PE	Science Lab	Music	PE	Library/SEL (every 2 weeks)
D	Science Lab	Music	PE	Library/SEL (every 2 weeks)	PE
E	Music	PE	Library/SEL	PE	Science Lab

LET'S GIVE
THIS A TRY!

Student Council, Assemblies & Spirit Days

The Wilson School Student Council is the governing body of Wilson students. Its members are charged with the responsibility of furthering the interest and welfare of the school and each student.

These student leaders help to organize our RAMS Assemblies where students are recognized for their academic growth, attendance, and community citizenship.

The Student Council also organizes several Spirit Days throughout the year. These will be announced in the weekly parent newsletters as well as posted on the website calendar. Please note, these are optional dress-up days and meant to build school spirit. This year, we will try to provide some way for all children to participate if they forget or feel unprepared to participate.

Continuum of Academic Supports

In an effort to provide a Multi-tiered System of Support (MTSS) Model at Wilson Elementary, teachers regularly review screening assessments to identify students who may be in need of additional supports and services.

For example, Fastbridge assessments are administered three times annually and the students who are coming up as "at risk" in reading will be automatically provided with quality reading intervention. All students who are below grade level in reading will be progress monitored, meaning teachers will regularly be checking to see if what we're providing to the child is working or not. When progress is not adequate, services may be intensified or escalated in response.

Home Support for Student Learning

Parents and families are critical partners in our educational program. By staying informed of what your child is learning in school, you can help support learning at home. Whether it be through homework practice, providing meaningful and enriching experiences, or regularly communicating with your child's teacher about their academic progress - your presence is an important part of their learning journey!

Should you have concerns about your child's academic progress, please reach out to discuss this with your child's teacher, the School Counselor, Assistant Principal, and/or the School Principal. We are here to support you as well as your child as you engage in the educational program on offer at Wilson Elementary.



STUDENT BEHAVIOR & DISCIPLINE

A Positive Behavior Intervention Support (PBIS) framework maximizes the selection and use of evidence-based prevention and intervention practices along a multi-tiered continuum that supports the academic, social, emotional, and behavioral competence of all students.

The goal of PBIS is to reduce major disciplinary infractions and antisocial behavior, which in turn result in the following:

- Reductions in aggressive behavior and improvements in emotional regulation.
- Improvements in academic engagement and achievement.
- Improvements in perceptions of organizational health and school safety.
- Reductions in teacher and student reported bullying behavior and victimization.
- Improvements in perceptions of school climate.

Bucket Fillers

Two students from each classroom are selected by teachers each month to be a “Ram of the Month.” The student is selected on the basis of displayed citizenship for that month. Rams of the month will have their name announced at our monthly assembly and receive a special lunch with the principal.

RAMS of the Month

Two students from each classroom are selected by teachers each month to be a “Ram of the Month.” The student is selected on the basis of displayed citizenship for that month. Rams of the month will have their name announced at our monthly assembly and receive a special lunch with the principal.



STUDENT BEHAVIOR & DISCIPLINE

RESPONSIBLE
ACHEIVING
MINDFUL
& SAFE



Continuum of Behavioral Supports

In line with our commitment to provide a Multi-tiered System of Support (MTSS), Wilson Elementary regularly reviews data related to school discipline in order to proactively provide various supports and services to students who are escalating in problem behavior.

Should your child demonstrate a need for further support in their behavior at school, you will be contacted about potential interventions that would work to improve their behavior. Parental and family involvement during this time is especially important so the child can see that both home and school are supportive of behavior improvement.

Suspension & Expulsion Policy

Students may be suspended or recommended for expulsion for any of the following: cause or threaten to cause physical injury to another person; possess, sell, or furnish any firearm, knife, explosive, other dangerous objects; possess, use, sell, or furnish any controlled substance, alcoholic beverage or intoxicant; commit or attempt to commit robbery or extortion; cause damage to school or private property; steal or attempt to steal school or private property; possess or use any tobacco product; commit an obscene act or engage in habitual profanity or vulgarity; possess, sell, or furnish any drug paraphernalia; disrupt school activities or willfully defy the authority of school personnel; receive stolen school or private property, or commit an act of sexual harassment. School rules and consequences are in effect while students are on school grounds while going to or from school, and during or going to or from a school-sponsored activity.

Home Support for Student Behavior

Teaching the RAMS Expectations at home, communicating directly and frequently with your child's teacher, and modeling problem-solving strategies are all effective ways in which to support your child's social-emotional development. Should you have any concerns related to your child's behavior at home or at school, please reach out to school professionals such as the classroom teachers, School Counselor, Assistant Principal, and/or the School Principal.

Student Dress Code

Wilson School believes that a student's appearance has an impact on his/her attitude and behavior at school. The Dress Code and Possession Policies are designed to help students develop a sense of modesty and decorum. The following standards for students are to be observed:

- Bandannas and hairnets are prohibited at school in all grades. Exceptions may be granted for medical reasons.
- Hats may be worn at recess, before school, and after school. They must be removed upon entering classrooms, the cafeteria, offices, and any other school buildings. Hats that promote drugs, alcohol, tobacco, gangs, graffiti, sex, violence, or displays inappropriate words or pictures are not permitted.
- Clothing is to be neat, clean, safe, and not disruptive. Clothing and jewelry that promote drugs, alcohol, tobacco, gangs, graffiti, sex, violence, or displays of inappropriate words or pictures are not permitted.
- Shoes must be worn at all times. Slippers/sandals without back/ankle straps or heel supports are not permitted for safety reasons.
- Students may not wear sheer shirts/blouses, low-cut clothing, strapless halter-tops, spaghetti straps, bare midriff tops, or skin-tight (spandex) bicycle pants or shorts.
- All students are to give proper attention to personal cleanliness and modesty in dress and grooming. Disruptive, outlandish haircuts and/or makeup (boys and girls) are not allowed.

Because of disruptions and safety concerns, identified gang attire is prohibited on campus. Some of the identified gang attire is: excessively wide and long pants/shorts, pants/shorts without properly sewn hems, metal belt buckles with initials, or socks pulled up to meet long shorts. All gang-related writings, materials, and graffiti are not permitted.

Students' Personal Items

And personal items such as iPods, skateboards, roller skates, electronic games, balls, toys, etc. are not to be brought to school. Such items will be confiscated and returned to the parent/guardian.

What's more, when children bring personal items from school, it serves as a distraction during school time and is at risk of being lost or stolen.

Student Homework & Regular Practice

Homework is assigned at the discretion of the teacher. Teachers may expect their students to have up to an average of twenty to sixty minutes of academic homework, which includes reading each night, Monday through Friday. Homework is designed to review skills/concepts already learned during class time. This ensures that students are given ample practice time needed to gain automaticity with the given topic. Students who have not completed assigned work may be required to attend recess and/or lunchtime detention to complete unfinished assignments.

Gridley Unified School Counselors

School counselors provide short-term individual and group counseling for at-risk students, provide behavioral techniques for teachers, parent consultations, education, and resource linkage. If your student is in need of a mental health referral please contact Behavioral Health at 530-846-7305 or call your school counselor directly for assistance.

Mental Health Community Resources

Gridley Unified School District has compassionate, well-trained counselors to help students and their families with mental health concerns. **If you are in a life-threatening situation or experiencing a mental health emergency, please call 911 immediately.**

24-Hour Crisis Services

1 (800) 334-6622 OR 530-891-2810
560 Cohasset Rd. Suite 180
Chico, CA 95926

Stabilization Line

530-891-3277

National Suicide Prevention Lifeline

[suicideispreventable.org](https://www.suicideispreventable.org)
1(800) 273-TALK (8255)

Resource needs in Butte County

Dial 211

Drug & Alcohol Screenings

Chico 530-879-3950
Oroville 530-538-7277

Red Nacional de Prevención del Suicidio

1(888) 628-9454 (Español)

Crisis Text Line

Text HOME to **741741** anywhere in the US

North Valley Talk Line (Warm Line)

1-855-582-5554
NON-CRISIS, PEER SUPPORT
Open 4:30 p.m.-9:30 p.m. Everyday

Behavioral Health Youth Screenings (By appointment only)

Chico Youth 530-891-2945
Gridley Youth 530-846-7305
Oroville Youth 530-538-2158

Health Services

Health services are provided by our District School Nurse, who screens for vision, hearing, and dental health issues. Heights and weights are done on all 4th and 5th-grade students on a yearly basis. The nurse also assists in dental screening and other district-authorized health services. In addition, she acts as a resource person in the classroom and provides instruction on head lice, general health and safety, menstruation, and nutrition.

The school nurse divides her time among the four school sites. She is available at all times for emergencies. If children need to see the nurse, teachers are to send them with a note to the office. Law prohibits the school from providing any medical treatment, other than first aid. If your child is ill in the morning, do not send him/her to school and endanger your child's health and the health of others. Please call the school office to notify us of your child's absence. If a child receives an injury requiring more than first aid treatment or becomes ill at school, every effort will be made to contact the parents. **It is very important that your child's school emergency card be kept up to date.** Pupils will not be sent home because of illness or injury until the parent or guardian has been notified.

Medications

In compliance with Section 49423 of the California Education Code and Section 2725(b) of the Nurse Practice Act, **medication cannot be given** to a student during school by the school nurse or designated school personnel **unless the school has written instructions and consent from both the physician and the parents on file.** The school must receive the following information before any medication can be administered during school hours:

- A written statement from the physician detailing the name, method of administration, dosage, and time the medication is to be given;
- Written parental/guardian consent indicating the desire that the school assists the student with his medication.

All medications must be in their original containers and kept in the office. In addition, the student may not carry asthma inhalers and bee sting kits without a medical authorization form signed by both the parent/guardian and the physician. These forms are available in the school office. **This includes over-the-counter medications, such as Tylenol, Motrin, cough syrup, cough drops, etc.**

Accidents & Insurance

In case of an accident, report to the nearest teacher or go to the office. A low cost insurance policy is available for students at the beginning of each school year. This insurance is recommended for all students.

School insurance will be offered at the beginning of each school year. The cost is small compared to the potential cost of medical care and parents are encouraged to take advantage of this service.

GETTING TO AND FROM SCHOOL SAFELY

WILSON
ELEMENTARY



Wilson Elementary Pick-up/Drop-off Procedures 2023-24

General Safety Expectations

In order to improve student safety, we ask that you:

- Plan and prepare for student drop-off and pick-up in advance
- Model respect for posted signs, crossing guards and school staff
- Enter and exit in accordance with the signage displayed
- Have patience with other drivers, students, and school staff



Stay CLEAR of school busses!

Avoid parking in front of
school during pick-
up/drop-off times



Make a plan for pick-up!

Complete the
Transportation Survey
to ensure teachers
send your children to
the right spot!



Drive-thru both lanes in the back!

Haskell & Washington
drive-thru lots have 2
lanes, let's use them to
move faster!



Reach out if you need help!

If you have any
concerns or questions,
please contact us!

Parent & Visitor Entrance

All parents and visitors must enter through the front and ring the doorbell to check in at the main office before entering campus.

**Wilson Elementary School Staff, School Site Council and PTA
Thank YOU for keeping our students safe!**

STUDENT SAFETY

Visitors & Volunteers

Parents and guardians are welcome to visit our campus and classrooms. We request that all classroom visitors make prior arrangements with teachers at least 24 hours in advance. Adult visitors who wish to visit students or teachers are required by law and Board Policy to check in at the school office upon their arrival so they will be given a Visitor's Pass to wear. Visitors who are assisting in the classroom must fill out a Volunteer Application at the District Office AND must have their fingerprints cleared. Students from other schools are not allowed on campus during school hours.

Duty Supervision

Supervisors are on duty during the lunch hour. As employees of the school, they are to be afforded the same obedience, respect, and consideration as teachers.

Loitering

Students are to leave the school and school grounds promptly after classes or activities are dismissed. There is no after-school student supervision, except for students who are transported by school bus or are involved in a school-sanctioned after-school program. Children who are not Wilson students are not permitted on campus at any time unless they have been registered as official guests in the school office..

Substitute Teachers

A substitute teacher will periodically teach every student. The most common reason for using substitute teachers occurs when the regular teacher is ill. However, substitutes are also used when regular teachers are on leave for personal business, professional training, or family emergency. Students are expected to be extra courteous to substitute teachers. Any misconduct in the classroom will be dealt with immediately.

Field Trips

Occasionally, students will take field trips to varying locations to supplement the curricular program offerings. Parents will be notified of all such field trips in advance. Walking field trips will not require parental permission. However, all other field trips, and especially those trips in which students are transported by vehicle, will require a signed parent permission slip. Students will not be permitted to attend any such field trip without the signed written consent of the student's parent or guardian. Parent permission by phone call will not satisfy this requirement. Field trips are viewed as extracurricular or co-curricular activities and students are required to maintain **appropriate citizenship** in order to attend. Students who are not allowed to participate in field trips will remain on campus and school personnel will provide supervision. Per board policy, field trips must maintain an adult-to-child ratio of 10:1 and if water is involved 5:1. Parents are encouraged to chaperone and get involved. For more information, please speak to your child's teacher.

Pets on Campus

Teachers, with the approval of the principal, may give special permission for pets to be brought to school as part of a special display or activity. However, under no circumstances is a potentially dangerous pet to be brought to school.

Bicycles

1. Bicycles must be walked to and from the bike racks at the Magnolia Street entrance. Regular bicycle traffic laws are to be observed, and bikes are to be kept in the racks on campus.
2. Courtesy to pedestrians is expected from all students.
3. For your protection, lock your bicycle to the bike racks. The school cannot be responsible for stolen bikes. Accessories, which may be easily removed, should not be left on bikes while at school.
4. Courtesy to pedestrians is expected from all students.

Emergency Drills

Each month, Wilson Elementary practices emergency drills. Some are announced and others are unannounced.

These drills include Earthquake, Fire, Shelter in Place and Active Shooter Drills. One drill each year is coordinated with Gridley Police Department so GUSD and GPD can rehearse communication and emergency response systems. This year, Wilson Elementary will identify one drill to also practice the evacuation site, which is the Vierra Park in back of the school campus. Please note that Catapult EMS is an emergency response system used for communication with parents. This system uses the contact information in Aeries; hence, the importance of keeping it updated at all times.

Crisis Plan

Gridley Unified School District has a crisis plan in effect in the event of an emergency, which provides school personnel with instructions regarding communication, lines of responsibility, and specific duties for various individuals, and contingency plans which would be in effect if any one of a number of disasters were to occur. Interested parties may review these plans by making a request at the school office.



**EACH YEAR, OUR SCHOOL
SAFETY PLAN IS
UPDATED, REVIEWED AND
APPROVED BY THE
SCHOOL SITE COUNCIL**

Wilson Elementary School

School Cancellation

Cancellation of school occurs only during circumstances such as extreme weather, equipment failure, or public crisis. School personnel are aware of the hardship that can be caused by an abrupt cancellation; therefore, the school will not be canceled unless a significant safety risk has been created by unusual circumstances. Every possible means are used to notify parents of a cancellation, including phone calls, radio, television, and newspapers. In the unusual circumstance where school must be canceled during the school day, school personnel will determine that all students have satisfactory transportation and supervision at their home before releasing them from school.

Smoking

Smoking on school grounds is prohibited at all times.

Solicitations

Students are not to be solicited for money unless the principal and school board have approved a project. No sale of items is to be conducted at school by students for community drives.

Title IX

It is the policy of the Gridley Unified School District not to discriminate on the basis of race, color, national origin, sex, or handicap in its vocational programs, services or activities as required by Title VI of the Civil Rights Act of 1964, as amended; Title IX of the Education Amendments of 1972; and Section 504 of the Rehabilitation Act of 1973, as amended.

Discrimination Policy

In accordance with Federal civil rights law and U.S. Department of Agriculture (USDA) civil rights regulations, and policies, the USDA, its Agencies, offices, and employees, and institutions participating in or administering USDA programs are prohibited from discriminating based on race, color, national origin, sex, religious creed, disability, age, political beliefs, or reprisal or retaliation for prior civil rights activity in any program or activity conducted or funded by USDA.

Persons with disabilities who require alternative means of communication for program information (e.g. Braille, large print, audiotape, American Sign Language, etc.), should contact the Agency (State or local) where they applied for benefits. Individuals who are deaf, hard of hearing, or have speech disabilities may contact USDA through the Federal Relay Service at (800) 877-8339. Additionally, program information may be made available in languages other than English.

To file a program complaint of discrimination, complete the USDA Program Discrimination Complaint Form, (AD-3027) found online at: How to File a Complaint, and at any USDA office, or write a letter addressed to USDA and provide in the letter all of the information requested in the form. To request a copy of the complaint form, call (866) 632-9992. Submit your completed form or letter to USDA by;

- (1) mail: U.S. Department of Agriculture
Office of the Assistant Secretary for Civil Rights
1400 Independence Avenue, SW
Washington, D.C. 20250-9410;
- (2) fax: (202) 690-7442; or
- (3) email: program.intake@usda.gov.

This institution is an equal opportunity provider.

Williams Complaint Classroom Notice for 2022-2023

Gridley Unified School District

Notice to Parents, Guardians, Pupils, and Teachers

Pursuant to California Education Code § 35186, you are hereby notified that:

There should be sufficient textbooks and instructional materials. That means each pupil, including English learners, must have a textbook or instructional materials, or both, to use in class and to take home.

School facilities must be clean, safe, and maintained in good repair.

There should be no teacher vacancies or misassignments. There should be a teacher assigned to each class and not a series of substitutes or other temporary teachers. The teacher should have the proper credentials to teach the class, including the certification required to teach English learners if present.

Teacher vacancy means a position to which a single designated certificated employee has not been assigned at the beginning of the year for an entire year or, if the position is for a one-semester course, a position to which a single designated certificated employee has not been assigned at the beginning of a semester for an entire semester.

Misassignment means the placement of a certificated employee in a teaching or services position for which the employee does not hold a legally recognized certificate or credential or the placement of a certificated employee in a teaching or services position that the employee is not otherwise authorized by statute to hold.

A complaint form may be obtained at the school office, the district office, or downloaded from the school's Web site at <http://www.gusd.org>. You may also download a copy of the California Department of Education complaint form in English and in other languages from the following Web site: <http://www.cde.ca.gov/re/cp/uc/ucpmonitoring.asp>

OUR COMMITMENT TO SUPPORT STUDENT LEARNING

It is important that families and schools work together to help students achieve high academic standards. Through this process, which includes teachers, families, students, and community representatives, the following are agreed upon roles and responsibilities that we as partners will carry out to support student success in school and in life.

Staff Pledge

I, as your (child's) teacher, agree to carry out the following responsibilities to the best of my ability:

- Provide a caring, safe, and warm learning environment;
- Provide basic literacy instruction using Common Core State Standards and board adopted curriculum;
- Have high expectations and help every child develop a love for learning;
- Maintain a safe school environment;
- Provide parents with timely communication regarding student progress;
- Provide instruction in citizenship skills including honesty and peaceful problem solving;
- Provide meaningful, homework assignments to reinforce and extend learning;
- Respect the school, students, staff, and families.

Student Pledge

I, as your student, agree to carry out the following responsibilities to the best of my ability:

- Come to school on time, ready to learn and work hard;
- Bring necessary materials, completed assignments, and homework;
- Know and follow the school and class rules;
- Play safely and resolve problems peacefully;
- Respect the school, staff, students, and families;
- Read every day at home.

Parent Pledge:

I, as a parent, agree to carry out the following responsibilities to the best of my ability:

- Provide a quiet time and a place for homework;
- Limit and monitor T.V. viewing;
- Read to my child, or encourage my child to read, for at least 15 minutes daily;
- Ensure that my child attends school on time daily, gets adequate sleep, regular medical attention, and proper nutrition;
- Participate in school activities (i.e. attend parent conferences, Back-to-School Night, etc.)
- Respect the school, staff, students, and families



WILSON ELEMENTARY SCHOOL

OUR DOOR IS ALWAYS OPEN

Joan Schumann, PhD
Wilson School Principal
jschumann@gusd.org

Sarah Moore
Assistant Principal
sarah.moore@gusd.org



FACULTY & STAFF

Grade 2 Teaching Team

Nicole Fanning
Danelle Holt
Roylene Mahic
LoriAnne Parks
Deidra Perry
Jennifer Polo

Grade 3 Teaching Team

Norma Castellanos
Ken Keith
Lindsey Hunter/Margaret Wilburn
Christine Kermen
Charity Holliman
Marnie Smith

Grade 4 Teaching Team

Julie Taranto
Anna Brink-Capriola
Rebecca Rutter
Tom Levin
Robin Ticknor

Grade 5 Teaching Team

Angela Andes
Pam Spaulding
Simeon Allison
Carol Avalos
Elizabeth Terpening

Rotation Teachers & Specialists

Samantha Stone, School Counselor
Chris Jacobs, Physical Education
Dennis Jackson, Science Teacher
Richard Gray, Music Teacher
Anne Sisney, Reading Intervention Teacher
Gabriela Tinoco, Speech & Language Therapist
Barbara Vogt, G2/G3 Ed Specialist
Justin Bontrager, G4/G5 Ed Specialist
Susan Shepard, Special Education Teacher
Yadira Heredia, School Psychologist

Office Staff

Patty Ramos, *School Secretary II*
Amber Corona, *Office Clerk*
Veronica Aceves, *Office Clerk*

Custodial Staff

Joe Garvin, *Lead Custodian*
Florencio Vasquez, Jr., *Custodian*
Ulises Torres, *Custodian*

Nursing Staff

Anita Oberle, *District Nurse*
Gladys Diaz, *Health Secretary*
Britzina Kehoe, *Clerical Aid- Health Services*

Counseling Assistant

Ashley Nelson

Librarian

Pamela Hewitt

Cafeteria

Maria Heredia
Yesenia Venegas

Instructional Aide/Yard Supervision

Bertha Lopez
Justine Hughes
Laura Ratana
Cameron Maynarich
Patty Kilby
Nancy Jimenez
Kim Wolfe
Janie Evans
Lisa Schohr
Sang Pharm
Lesley Martinez-Alejo
Noemi Ruiz
Patricia Brogdon
Blanca Torres
Yasenia Venegas
Farhana Ehsan
Desiree Rodriguez
Kathryn Groch
Rachel Atkins
Erica Patterson

